

Nodusfactory-Industry®



Designer & Manufacturer

Safety equipment for intervention professionals

Working at heights
Rope Climbers and Pruners
Rescue services
Fire brigade

2024



www.nodusfactory-industry.com

Noder is our art combined with their science.

The professionals involved in working at height and on ropes are artists who have mastered the techniques of "knotting". They are also scientists who understand the strengths and stresses of knots.

Who are we?

Nodus Factory™ is a French brand that develops innovative personal protective equipment (PPE) for intervention professionals.

The company is located in Vannes, Brittany, it was founded in 2015.

Nodus Factory™ initially focuses on textile fittings and then on the development of PPE that is both effective and comfortable. The company uses state-of-the-art materials and technologies to create products that provide maximum protection to users while minimizing their footprint. One of Nodus Factory's™ most notable innovations is its adjustable and self-locking textile sling, the Textile-Blocker®. This adjustable and self-locking textile sling is made from an innovative, light and resistant textile fibre blend that offers ease of use, quick installation and great safety.

Nodus Factory™ also offers a range of other products for working at heights and safe operations, including dummy forks, slings, straps and an innovative rope for difficult environments, the DYTECH.®

All of the company's products meet the highest safety standards.

Here are some of the benefits of Nodus Factory's innovations in safety equipment for intervention professionals:

Enhanced Protection:

Nodusfactory-Industry's products offer superior protection to traditional PPE.

Improved Comfort:

Nodusfactory-Industry's products are lightweight and comfortable to wear.

Improved handling:

Nodusfactory-Industry's products do not interfere with the user's movements.

Nodus Factory™ is a leading company in the development of innovative PPE for intervention professionals. The company's products offer superior protection, improved comfort, and improved maneuverability.

Nodus Factory™

Parc Laroiseau
5, rue Ella Maillart
F – 56000 Vannes



Tél : +33 (0) 2 97 67 64 83

Email : sales@nodusfactory.com

Nodus Factory™

Mobile anchor

An EN 795 PPE category 3 textile shackle is a removable anchorage device made from a textile material, such as Dyneema or aramid.

It is designed to withstand heavy loads in harsh conditions. Textile shackles are used in a variety of applications, including working at heights, construction, and rescue.

Textile shackles comply with the EN 795 standard, which defines the safety requirements for anchoring devices used in work at height. Category 3 textile shackles are designed to withstand loads of 22 kN or more. This makes them suitable for applications with high loads, such as construction work or rescue operations.

Textile shackles have several advantages over traditional metal shackles. They are lighter, more flexible and more resistant to corrosion. They are also easier to install and use.

Textile shackles should be inspected regularly to ensure that they are in good condition and can withstand the expected loads.

Produce :

- **MTS®** - EPI3 Mobile Anchor
- **Easy-shackle®** - MES Textile Anchor Connector "EPI3«
- **MS® Cable-lift** - Dyneema® Shackle for Rope Lifting
- **Manille MS® HL** - Dyneema® Heavy Load Shackle
- **Freelock®** - Universal Friction Ring Connector
- **Textile-Fuse®** - Textile anchoring fuse



MTS® - MOBILE ANCHOR « EPI3 »

EN 795 : 2012 Type B - EPI 3

TS 16415 : 2013



BUREAU
VERITAS



This product complies with Regulation (EU) 2016/425 on personal protective equipment.

Designation	Working load	Weight	Length
Connector			
<i>Aluminium 7075 Durci</i>	kN	gram	cm
MTS 10.6	22 kN	14	6
MTS 10.9	22 kN	18	9
MTS 10 Tailor-made	22 kN	0	Max 30 cm
MTS 12.9	22kN	24	9
MTS 12.12	22kN	30	12

DATA SHEET

1- Dyneema® textile core Ø 3 mm

- ✓ 12 braided - Stretched
DSK78-MTS10 / CR 3600Kg
Veritas - LRT 19/07/30 - Report n° 34
DSK 99/MTS12 / CR 6700kg
Veritas - LRT 19/07/30 - Report n° 83

2- Dyneema® overshooth

- ✓ 48 braided DSK78 noir - Enzimée

3- Textile clasp

- ✓ Sewing thread DSK Red
- ✓ Load and wear indicator
- ✓ Dtex 517*3 - Elongation 3%

4- T-Bone Textile Clasp Retention

- ✓ Aluminium 7075 - Module Younk 70 GPa
- ✓ Anodized & Hardened - Light Grey Tone

5- Locking Twist-Lock®

- ✓ Velcro® - Polypropylene & Velvet PA Black

USES

Removable locking anchorage device designed to move along a belay support.

EN 795 : 2012 Type B

TS 16415 : 2013



Additional information: sales@nodusfactory.com

NODUS
FACTORY
MADE IN FRANCE



www.nodusfactory-industry.com

Scan me !

MTS[®] - MOBILE ANCHOR « EPI3 »



Personal protective equipment PPE category 3 against falls from a height.

Removable locking anchorage device EN 795:2012 types B + TS16415:2°13/B intended to move along a belay support;

- Reserved for use by 2 people / minimum measured resistance 22KN
- Do not use this equipment as a means of lifting

This product should not be used beyond its limits or in any situation other than that for which it is intended.

Advantages

- ❑ Weight/size/strength ratio
- ❑ Use in cold environments (freezing)
- ❑ Multi-directional work (no small/large axes)
- ❑ Accepts compression and twisting
- ❑ No risk of opening due to vibration - Secure closing
- ❑ No risk of compression breakage - Textile flexibility

Data sheet

- ❑ Body and textile clasp 100% Dyneema[®]
- ❑ Hardened Anodized Aluminum 7075 Clasp Retaining T-Bone
- ❑ Twist-Lock[®] Velcro[®] wrap on the textile clasp

References

MTS 10-6	6 cm	40021T6
MTS 10-9	9 cm	40021T9
<i>MTS 10-x</i>	<i>Max 30</i>	<i>Sur mesure</i>
MTS 12-9	9 cm	40023T9
MTS 12-12	12 cm	40023T12



NODUS
FACTORY
MADE IN FRANCE

Easy-shackle® - Textile anchor connector « EPI3»

« Textile anchoring and safety connector for fall protection nets»



CE Complies with the Machinery Directive 2006/42/EC

Designation	Breaking Load	Weight	Length
Textile connector			
	kN	gram	cm
MES 5	18 kN	9	6
MES 6	25 kN	14	9
MES 8	35 kN	42	12
MES 8L « Tailor-made»	35 kN	/	Tailor-made

DATA SHEET

- ✓ 1- Dynnema Fiber Rope® High Tenacity
- ✓ Ø rope according to model
- ✓ 12 Braids - Pre-stretched

2- Textile clasp

- ✓ Sewing thread DSK Red
- ✓ Load and wear indicator
- ✓ Dtex 517*3 - Elongation 3%

✓ 3- T-Close Connector

- ✓ Tech PA Polymer Filled Glass 30% - Younk Module 9.6 GPa

4- Manual locking Cap-Lock®

- ✓ Self-locking closure

Option :

Sheath Dyneema Protective Gear®

- ✓ 48 DSK78 braids black - coated

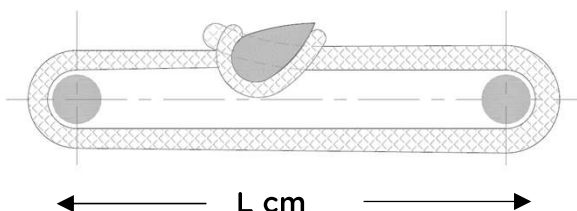
Patented product / Ref. 157104936/3120042

USES

Removable self-locking anchoring device designed to move along a belay support.

EN 795 : 2012 Type B

TS 16415 : 2013



Additional information: sales@nodusfactory.com

NODUS
FACTORY
MADE IN FRANCE

www.nodusfactory-industry.com



Scan me !

Easy-shackle® - Textile anchor connector « EPI3»

« Textile anchoring and safety connector for fall protection nets»



Textile safety connector for category 3 PPE personal protective equipment against falls from height.

Use as a removable anchoring device with self-locking EN 795: 2012 types B + TS16415 :2°13/B intended to move along a belay support;

Reserved for the use of:

MS5 = 1 person / minimum measured resistance 18kN

MS6 & MS8 = 2 people / minimum measured resistance 22kN

Do not use this equipment as a means of lifting

This product should not be used beyond its limits or in any situation other than that for which it is intended.

Avantages

- Weight/size/strength ratio
- Use in cold environments (freezing)
- Multi-directional work (no small/large axes)
- Accepts compression and twisting
- No risk of opening due to vibration - Secure closing
- No risk of compression breakage - Textile flexibility

Data sheet « UHMPE / Dyneema® »

- ✓ High tensile strength: 8 x more than steel
- ✓ Good resistance to fatigue and abrasion
- ✓ Excellent dimensional stability: low creep and high elasticity
- ✓ Chemical Resistance

References

MES 5	6 cm	40024
MES 6	9 cm	40025
MES 8	12 cm	40026
MES 8L		Tailor-made



NODUS
FACTORY
MADE IN FRANCE

Parc d'Activités de Laroiseau • 5 rue Ella Maillart • F- 56000 Vannes

Tél : +33 (0)2 97 67 64 83 • Mail : sales@nodusfactory.com • Internet : www.nodusfactory-industry.com

MS[®] Cable-lift - Dyneema[®] Shackle for cable lifting



CE Complies with the Machinery Directive 2006/42/EC

Designation	Breaking Load	Length close (cm)
Cable-lift textile shackle		Minimum
<i>DsK 99</i>	kN	cm
MS CL 10	80	12
MS CL 12	100	14
MS CL 14	140	16
MS CL 16	160	18
MS CL 18	200	22
MS CL 22	240	26
MS CL 24	300	30
MS CL 28	580	34

DATA SHEET

- 1- Dyneema[®] textile core \varnothing variable
 - ✓ DSK 99 - 12 fuseaux - Pr  tir  s et ensim  
- 2- Dyneema[®] Oversheath
 - ✓ 48 braids DSK78 black - ensimated
- 3- Textile clasp
 - ✓ Sewing thread DSK Red
 - ✓ Load and wear indicator
 - ✓ Dtex 517*3 - Lengthening 3 %
- 4- T-Bone Textile Clasp Retention
 - ✓ Aluminium 7075 - Module Younk 70 GPa
 - ✓ Anodized & Hardened- Light grey tone
- 5- Locking Twist-Lock[®]
 - ✓ Velcro[®] - Polypropylene & Velvet PA Black
- 6- Protective Sheath
 - ✓ PES[®] Vectran[®] - Woven Polyester 48 Braids Velour Black

USES

Ms[®] Cable-lift, is a Dyneema[®] lifting shackle, specially designed for lifting wire ropes, chairlifts, cable cars, railway cables, etc.

Customer Reviews« DS Valmorel »

« Our technicians regularly use them in various applications thanks to their light weight and small footprint, they are very satisfied with them! The steel shackles remain on the shelves...»

Additional information: sales@nodusfactory.com

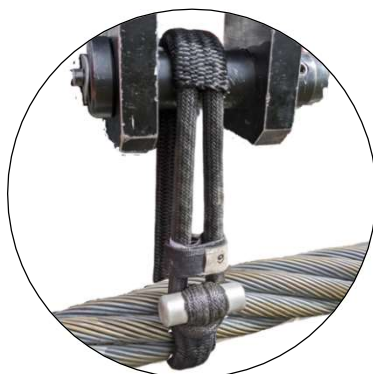
NODUS
FACTORY
MADE IN FRANCE

www.nodusfactory-industry.com



Scan me !

MS[®] Cable-lift - Dyneema[®] Shackle for cable lifting



Ms[®] Cable-lift, is a Dyneema[®] lifting shackle, specially designed for lifting wire ropes, chairlifts, cable cars, railway cables, etc. etc.
Advantageously replaces moving head shackles for unwiring ski lift pylons and for carrying out maintenance on their equipment.

Textile shackles will be used for the interface at the ends of the lifting device:

- Fixed Point → Lifting Device
- Cable → Lifting Device

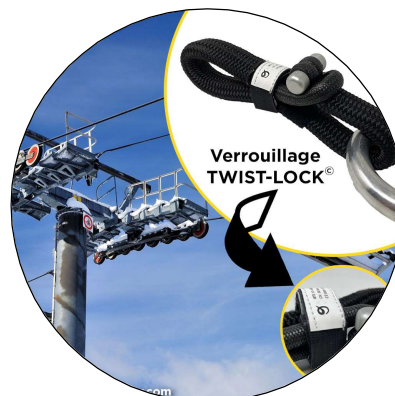
The Ms[®] Cable-lift textile shackle is used to lift the carrier rope or tow rope, by means of a lever hoist (Yale ERGO 360 type) connected to a fixed mooring point and from the other end to the rope (ranging from a diameter \varnothing 12 mm to \varnothing 56 mm), both static.

Advantages

- Weight/size/strength ratio
- Use in cold environments (freezing)
- Multi-directional work (no small/large axes)
- Accepts compression and twisting
- No risk of opening due to vibration - Secure closing
- No risk of compression breakage - Textile flexibility

References

MS CL 10	40060CL
MS CL 12	40028CL
MS CL 14	40061CL
MS CL 16	40029CL
MS CL 18	40062CL
MS CL 22	40063CL
MS CL 24	40064CL
MS CL 28	40065CL



Shackle MS[®] HL - High-load Dyneema[®] shackle



CE Complies with the Machinery Directive 2006/42/EC

Designation	Breaking load	Length close
Textile shackleHL	SK99	Minimum
SK 99	kN	cm
MS HL 10	80	12
MS HL 12	100	14
MS HL 14	140	16
MS HL 16	160	18
MS HL 18	200	22
MS HL 22	240	26
MS HL 24	300	30
MS HL 28	580	34

DATA SHEET



1- Core Dyneema textile[®] Ø variable

- ✓ SK 99 - 12 or 18 braids - Pre-stretched and ensimed
- ✓ 12 braids with polyurethane sizing
- Ultra High Modulus Polyethylene
- ✓ Temperature resistance - 140°C
- ✓ Loss of resistance of 50% at 80°C
- ✓ Excellent resistance to UV rays and chemical agents
- ✓ Very low elongation power < 2.5%

2- Sheath in Dyneema[®]

- ✓ 48 fuseaux SK78 noir - Ensimé

3- Textile clasp

- ✓ Sewing thread DSK Red
- ✓ Load and wear indicator
- ✓ Dtex 517*3 - Elongation 3%

4- T-Bone textile clasp retainer

- ✓ Aluminium 7075 - Module Younk 70 GPa
- ✓ Anodized & Hardened - Light Grey Tone

5- Locking Twist-Lock[®]

- ✓ Velcro[®] - Polypropylene & Black PA Velvet

USES

The MS[®] High Load high-strength[®] textile shackle is a flexible textile connector made of ultra-light and very resistant Dyneema[®].

- Lifting industry, forestry/pruning, construction, towing.

Choose your Ms[®] HI shackle according to the breaking load required.

Additional information: sales@nodusfactory.com

NODUS
FACTORY
MADE IN FRANCE



www.nodusfactory-industry.com

Scan me !

Shackle MS[®] HL - High-load Dyneema[®] shackle



The MS[®] HL flexible shackle is a textile connector that connects ends: cables, straps, pulleys,...

Due to its ease of handling and resistance to heavy loads, it is an easy replacement for steel shackles.

✓ It is a technical and high-performance product for the needs of lifting, pulling and towing.

No maintenance is required, so it has a longer lifespan.

✓ The special feature of this product is that it is oversheathed for increased protection and exceptional durability.

✓ A multi-purpose textile connector for heavy loads, as strong as a steel shackle, but 10x lighter!

Advantages

- Weight/size/strength ratio
- Use in cold environments (freezing)
- Multi-directional work (no small/large axes)
- Accepts compression and twisting
- No risk of opening due to vibration - Secure closing
- No risk of compression breakage - Textile flexibility

References

MS HL 10	40077
MS HL 12	40078
MS HL 14	40079
MS HL 16	40080
MS HL 18	40081
MS HL 22	40082
MS HL 24	40083
MS HL 28	40084



Freelock® - Self-tightening loop for friction ring

Dyneema Textile Connector with Adjustable & Self-Tightening Eye



CE Complies with the Machinery Directive 2006/42/EC

Designation	Ring & Nub		Breaking Load		Ø Eye
			Freelock®	Freering®	
			kN	kN	Ø mm Max
Freelock 14	FRD 14		38	18	12
Freelock 20	FRD 20	FR Nub 40	63	50	22
Freelock 28	FRA 28		168	140	26
Freelock 38	FRA 38	FR Nub 60	355	300	36
Freelock 45	FRA 45		530	450	42

DATA SHEET

Freelock®, Textile sling, equipped with two adjustable and self-tightening "Eye" buckles.

For quick mounting of accessories:

- ✓ Low-friction rings **Freering®**
- ✓ Pulley **Freenub®**
- Dyneema textile core® **DSK78**
- ✓ Ø Fiber according to reference
- ✓ 12 ou 18 braids - Stretched
- Oversheath sock Dyneema®
- ✓ 48 braids DSK78 noir - Coated
- Locking Twist-Lock®
- ✓ Velcro® Polypropylene & Velor PA

INSTALLATION

- 1- Open the Freelock® "Eye" buckle by sliding the overshooth downwards.
- 2- Insert the ring or Nub into the two textile loops
- 3-Close the buckles by sliding the textile sock towards the ring or the Nub.
- 4-Lock the closure by wrapping the two strands of the sling with the Twist-lock®



Additional information: sales@nodusfactory.com



1

2

3

NODUS
FACTORY
MADE IN FRANCE

www.nodusfactory-industry.com



Scan me !

Freelock® - Self-tightening loop for friction ring

Dyneema Textile Connector with Adjustable & Self-Tightening Eye



This adjustable eye sling is a textile connector made of Dyneema® with a "Self-tightening sock" type sheath.

It must be used :

In combination with friction rings known as "retention rings" or Freenub pulleys.

- This product should not be used beyond its limits or in any situation other than that for which it is intended.

Advantages

- Ease and speed of use
- Weight-to-high strength ratio
- Performance, lightness and reliability
- Absolute safety, because the "mobile" running rope passes inside the dormant rope of the Freelock connector, there can be no break in the structural chain in case of breakage of the Freering ring.

References

Freelock 14	40093
Freelock 20	40094
Freelock 28	40095
Freelock 38	40096
Freelock 45	40097



NODUS
FACTORY
MADE IN FRANCE

Textile-Fuse® - Textile anchoring fuse

« Safety device for anchors and ropes » Patented FR2105794

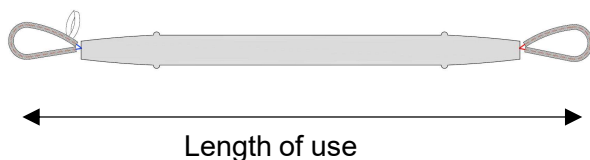


Designation	Length Use	Service limit strength	Ultimate limit tension	Length TLS	Service limit breaking
Lighting	L	TLS			TLR
Mode 1	cm	daN			daN
Textile-Fuse E6	20	60	/	/	2000
Textile-Fuse E18	22	180	/	/	2000
Textile-Fuse E36	26	360	/	/	2000
Street Sky			TLU	Ls	TLR Risk Factor ≥ 3 x TLU
Mode 2	cm	daN	daN	cm	
Textile-Fuse F6	20	60	100	40	2000
Textile-Fuse F18	22	180	300	44	2000
Textile-Fuse F36	26	360	600	52	2000

DATA SHEET

- ❑ 100% polyester webbing rope PES®
- ✓ pre-stretched, insured - Black
- ✓ Polyopheline HDPE sheath

Nodusfactory™ Textile-fuse® charging fuses are manufactured in France in our workshops.



USES

Mode 1 :

For illuminations, the service limit breaking is calculated at 3 x the ultimate limit tension.

Mode 2 :

Concerns "Street Sky", shade veil, etc. The breaking tension is greater than the ultimate limit service.

The Textile-Fuse® makes it possible to ensure the link between two elements and, in the event of exceeding the limits authorised or declared by the user or the "Man of the Art" installer, to reduce the tensions on the structure to which it is attached.

Information sales@nodusfactory.com

NODUS
FACTORY
MADE IN FRANCE

www.nodusfactory-industry.com



Scan me !

Textile-Fuse® - Textile anchor fuse

« Safety device for anchors and ropes » Patented FR2105794



The Textile-fuse is a safety fuse® for so-called "anchors and wires" mounting.

Working Principle:

The first state, known as the "**resistance of use**"

The textile fuse under load is integral because it is below the operating limit tensile stress.

The second state is referred to as the "**operating limit tensile stress**"» TLS

The textile fuse opens when the given load has been exceeded in order to release the tensile stress when it is too high and to indicate to the user that the calibrated and allowed service limit load has been exceeded.

The third so-called "**ultimate limit tensile stress**" break" TLR states

The textile fuse breaks when the given load is higher than the ultimate limit voltage in order to release all the tension stress and indicate to the user that the calibrated and authorized load on the fixed anchor "the plate" has been exceeded.

The use of the textile fuse should not replace the rules of the art and the usual know-how of men of the art, as a reminder there is no such thing as zero risk.

Several models are available, depending on the required calibration in operating voltage known as TLS and breaking voltage known as TLU.

Advantages

- Avoid damage and damage to structures by exceeding the integrity voltage limit
- Securing people and goods in the so-called "anchors and fillins"
- Passive safety – reloading of the canopies by feathering
- Nodusfactory repairability in category 1

References

	Mode 1/E	Mode 2/F
Textile-Fuse 6	40101	40104
Textile-Fuse 18	40102	40105
Textile-Fuse 36	40103	40106



False forks[®] and adjustable slings[®].

Adjustable dummy forks and slings are lifting equipment used to lift and move heavy loads. They offer a number of advantages over traditional equipment, including:

Flexibility: Adjustable dummy forks and slings can accommodate a variety of loads, from the lightest to the heaviest. They can also be used to lift loads of various shapes and sizes.

Security: Adjustable dummy forks and slings are designed to provide safe and efficient lifting. They comply with the highest safety standards and are made from high-quality materials.

Efficiency: Adjustable dummy forks and slings can help reduce the time and effort required to lift and move loads. They can also help improve lifting accuracy.

Here are some specific examples of the benefits of using dummy forks and adjustable slings:

In warehouses, the adjustable dummy forks can be used to lift pallets of goods of different sizes and weights. They can also be used to lift irregularly shaped loads, such as machinery or equipment.

In construction, adjustable dummy forks can be used to lift beams, columns, and other structural elements. They can also be used to lift heavy loads, such as cranes or excavators.

In rescue operations, adjustable dummy forks can be used to lift wrecked vehicles or injured people.

They can also be used to lift dangerous loads, such as chemicals or radioactive materials.

Adjustable dummy forks and slings are a versatile tool that can be used in a variety of applications. They offer a number of advantages over traditional equipment, including: **flexibility, safety and efficiency.**



False forks® and adjustable slings®

Produce :

- **Treerope®-Adjust** - Adjustable anchor strap
- **Treering®-Segment** - Adjustable anchor strap
- **Treering®-Adjust** - Adjustable anchor strap
- **Textile-Blocker®** - Adjustable anchor sling
- **Prussik-loop®** - Self-locking knot



Treerope®-Adjust - Adjustable anchor strap

« Adjustable false fork »



CE Complies with the Machinery Directive 2006/42/EC

Designation	Working Load	Length
Textile connector	Basket	Adjustable
<i>DSK78</i>	kN	m
Treerope Adjust 1.8	22 kN	80 / 180
Treerope Adjust 2.4	22 kN	80 / 240

DATA SHEET

Adjustable anchor strap:

- Adjustable and self-locking textile blocker
- Mixed hollow braid made of Dyneema fiber®
- ✓ DsK 78 pre-stretched 12 fx enzymated and sewn
- ✓ polyester sheath PES HT black
- ✓ Adjustment buckles with Dyneema® 48 fx overshath
- ✓ 2 loops of terminations spliced and sewn

MTS Nodus Factory Textile Shackle Connector

Accessory Option:

- Hardened aluminum FRD rings

USES

The anchor strap can be used as a false fork, anchor point or connecting elements for ropes with splices.

Adjustable and self-locking
Length: 180 cm and 240 cm
Complies with EN 795 B

Ideal for overhead and pruning work, the strap is easy to install and adjust.

Additional information: sales@nodusfactory.com

NODUS
FACTORY
MADE IN FRANCE

www.nodusfactory-industry.com



Scan me !

Treerope®-Adjust - Adjustable anchor strap

« Adjustable false fork »



The Treerope-Adjust anchor strap allows you to create an anchor point that is easily attached as close as possible to the structure "Posts, chimneys, IPNs, trees,... etc"

- Reserved for use by 2 people / minimum measured resistance 22KN
- Do not use this equipment as a means of lifting

«Used as a false fork and serves as a protection for the tree, placed either around the trunk or around the chosen branch»

This product should not be used beyond its limits or in any situation other than that for which it is intended.

Advantages

- Comfortable to use, adjustable and self-locking
- Weight-to-strength ratio
- Performance, lightness and reliability
- Textile flexibility and protective sheath

References

Treerope-Adjust 18	40042
Treerope-Adjust 24	40043



Treering®-Segment - Adjustable false fork

«Adjustable multi-purpose false-fork with segments»



Complies with the Machinery Directive 2006/42/EC

Designation	Working Load	Length
Textile connector	Basket	Adjustable
<i>DSK78 & Aluminium Durci</i>	kN	ml
TR-segment 125	22 kN	1,25
TR-segment 250	22 kN	2,50
TR-segment 500	22 kN	5,00

DATA SHEET

- ❑ 100% Dyneema textile rope®
- ✓ Dsk 78 12 fuseaux
- ✓ Pre-stretched
- ❑ Triple-cross threading segmentation
- ❑ Sheathed and sewn structural termination
- ❑ Low-friction ringFRD
- ✓ Hardened 7075 high-strength anodized aluminum
- Adjustable by 6 cm or 9 cm segmentation
- ✓ Length: 1,25-s6/ 2,5-s9/ 5,00-s9 m (other lengths on request)
- ✓ Complies with EN 795 B

USES

Ideal for working at heights and pruning, the Treering-segment webbing is easy to install and use.

The Treering®-segment is used as:

- ✓ Anchor point
- ✓ Segmented false-fork
- ✓ Choke knot
- ✓ Deflection point
- ✓ Connecting Element

Additional information: sales@nodusfactory.com

NODUS
FACTORY
MADE IN FRANCE

www.nodusfactory-industry.com



Scan me !

Treering®-Segment - Adjustable false fork

«Adjustable multi-purpose false-fork with segments»



The Treering-Segment false fork “anchor strap” allows you to create an anchor point that is easily attached as close as possible to the structure “Posts, chimneys, IPNs, trees,... etc”

- Reserved for use by 2 people / minimum measured resistance 22KN
- Do not use this equipment as a means of lifting

Used as a false fork, it serves as a protection for the tree, placed either around the trunk or around the chosen branch.

This product should not be used beyond its limits or in any situation other than that for which it is intended.

Advantages

- ❑ Ease of use, adjustment point every 6 cm (TS 125) or 9 cm (TS 250/TS 500)
- ❑ Weight-to-splice ratio of 22Kn
- ❑ Performance, lightness and reliability
- ❑ Textile flexibility and protective oversheath “Accessory Option”

Reference

Treering-Segment 125	40060
Treering-Segment 250	40044
Treering-Segment 500	40045



NODUS
FACTORY
MADE IN FRANCE

Treering®-Adjust - Adjustable anchor strap

« Adjustable false fork »



CE Complies with the Machinery Directive 2006/42/EC

Designation	Working Load	Weight	Length
Textile connector	Basket		Adjustable
<i>DSK78 & Hardened aluminum</i>	kN	gr	cm
TR Adjust 12	22 kN	196	80 à 120
TR Adjust 20	22 kN	196	80 à 200

DATA SHEET

- 1- Dyneema® textile core® Ø 7 mm
 - ✓ 12 braids - Stretched *DSK78*
- 2- Polyester PES® overshooth
- 3- Hardened anodized aluminum friction ring
 - ✓ Freering 14 & 20

➤ **Installation :** Pass the abseiling rope through the rings of the dummy fork, moving from the smaller ring to the larger of the two rings.

✓ **Length adjustment:** simply pull on the handle-shaped textile termination.

➤ **Uninstalling :** The rappelling rope must be pulled after removing the carabiner so that it comes out of the larger of the two low-friction rings.

USES

The adjustable anchor strap can be used as a false fork, anchor point or connecting elements for ropes with splices.

- Adjustable and self-locking, it can be retrieved from the ground.

This product meets the following safety standards:

- ✓ EN 795-B
- ✓ EN 354

Additional information: sales@nodusfactory.com

NODUS
FACTORY
MADE IN FRANCE

www.nodusfactory-industry.com



Scan me !

Treering®-Adjust - Adjustable anchor strap

« Adjustable false fork»



The Treering-Adjust anchor strap allows you to create an anchor point that is easily attached as close as possible to the structure "Posts, chimneys, IPNs, trees,..."

- Reserved for use by 2 people / minimum measured resistance 22KN
- Do not use this equipment as a means of lifting

« Used as a false fork and serves as a protection for the tree, placed either around the trunk or around the chosen branch»

This product should not be used beyond its limits or in any situation other than that for which it is intended.

Rope recommended

Small ring FRD 14 - recommended rope 8mm/12mm - inner diameter 16mm

Large ring FRD 20 - recommended string 12mm/18mm - inner diameter 24mm

Advantages

- Comfortable to use, adjustable and self-locking
- Weight-to-strength ratio
- Performance, lightness and reliability
- Textile flexibility and protective sheath

Références

Treering-Adjust 1,2	40030
Treering-Adjust 2,0	40040



Textile-Blocker® - Adjustable anchoring sling



CE Complies with the Machinery Directive 2006/42/EC

Description	Safe Working Load	Length
Adjustable textile sling for anchoring	Direct kN	Adjustable cm
Textile-Blocker Adjust 12	22 kN	15 / 120
Textile-Blocker Adjust 20	22 kN	15 / 200

TECHNICAL DATA

Adjustable anchor sling:

- Adjustable and self-locking textile blocker
- Mixed hollow braid made of Dyneema fiber®
- ✓ DsK 78 pre-stretched 12 fx enzymated and sewn
- ✓ Adjustment buckles with Dyneema® 48 fx oversheath finish spliced and sewn
- ✓ PE over-sheathed "Eye" buckle

Recommended connector:

- MTS textile shackle
- EN carabiner

USES

Anchoring sling, can be used as an anchoring point or connecting element.

- Adjustable and self-locking sling
- ✓ Maximum length: 120 cm and 240 cm

This product complies with safety standards:

- ✓ EN 795-B
- ✓ EN 354

Additional information : sales@nodusfactory.com

NODUS
FACTORY
MADE IN FRANCE

www.nodusfactory-industry.com



Scan me !

Textile-Blocker[®] - Adjustable anchoring sling



The Textile-Blocker Adjust anchoring sling allows you to create an adjustable anchoring point that is easy to fix and adjust.

- For use by 2 people only / minimum measured strength 22KN
- Do not use this equipment as a means of lifting

This product must not be stressed beyond its limits or in any situation other than that for which it is intended.

Advantages

- ❑ Comfortable to use, adjustable and self-locking
- ❑ Weight/resistance ratio
- ❑ Performance, lightness and reliability
- ❑ Flexible fabric and protective overshooth

References

Textile-Blocker Adjust 12	40058
Textile-Blocker Adjust 20	40059



NODUS
FACTORY
MADE IN FRANCE

Prussik-loop® - Self-locking knot

« Self-locking pruning rope or anti-melt lowering brake »



Designation	Working Load	Breaking Load	Length
Textile connector	Basket	Direct	Right
Vectran & Sheath PES	kN	kN	cm
Prussik-loop 45	22 kN	34	45
Prussik-loop 50	22 kN	34	50

DATA SHEET

- ❑ Prussian-Loop®
 - ✓ Technora® or aramide® braided rope Ø 6,5 mm
 - ✓ Sheath PES® 48 Fx
 - ✓ PE sheathed spliced eye
 - ✓ Length of 45 cm and 50 cm

Technora® or aramide® braided rope

- ✓ High tensile strength
- ✓ Lightweight and strong (8 times stronger than steel)
- ✓ Good fatigue resistance
- ✓ Good resistance to T°
- ✓ Dimensional Stability

- ❑ Breaking strength of 34 kN

USES

The Prussik-loop lanyard is a self-locking loop pruning rope with a sewn-in loop.

It is ideal to be used as a brake when going down the rope.

This product meets the following safety standards:

- ✓ EN 795-B
- ✓ EN 354

Additional information: sales@nodusfactory.com

NODUS
FACTORY
MADE IN FRANCE

www.nodusfactory-industry.com



Scan me !

Prussik-loop® - Self-locking knot

« Self-locking pruning rope or anti-melt lowering brake »



The Prussik-loop lanyard is a rope with sewn splice, it is ideal to be used as a brake when descending on a rope.

Made of "Technora®" or aramid with the following properties:

- ✓ Thermal resistance of +/- 500°C
- ✓ High chemical resistance
- ✓ Insensitive to the actions of water
- ✓ Resistant to organic solvents and acids

The Prussik-loop consists of:

- A loop (endless rope) braided in aramid, a fiber known to withstand high temperatures and to display good mechanical properties.
- A protective PES sheath.
- A spliced and sewn loop overmolded in PE.

This product should not be used beyond its limits or in any situation other than that for which it is intended.

Advantages

- Ease of use and self-locking knot
- Performance, lightness and reliability
- Textile flexibility and protective sheath
- Weight-to-high strength ratio
- Flexibility of the textile connector

Reference

Prussik-loop 45	40055
Prussik-loop 50	40056
Prussik-loop xx	



Low-friction® pulleys and rings

Low-friction pulleys and rings are essential equipment for professional responders.

They are used to reduce friction between the rope and the anchor point, reducing the effort required to lift or move loads.

Low-friction pulleys are typically made from composite materials, such as aluminum or titanium.

These materials are very resistant and offer a low coefficient of friction. Low-friction pulleys are available in a variety of sizes and shapes, to suit a variety of applications.

Low-friction rings are also made from composite materials. They are typically used to form anchor points or connection points for ropes. Low-friction rings offer a low coefficient of friction and are very durable.

Low-friction pulleys and rings offer a number of benefits for intervention professionals, including:

Reduced effort: Low-friction pulleys and rings reduce the effort required to lift or move loads. This can be a significant advantage for emergency professionals, who often have to lift heavy loads or work in difficult conditions.

Improved Efficiency: Low-friction pulleys and rings can help improve the efficiency of response operations. This can help reduce response times and improve the safety of response professionals.

Increased Security: Low-friction pulleys and rings can help increase the safety of response operations. This is due to the fact that they reduce the risk of rope breakage and accidents.

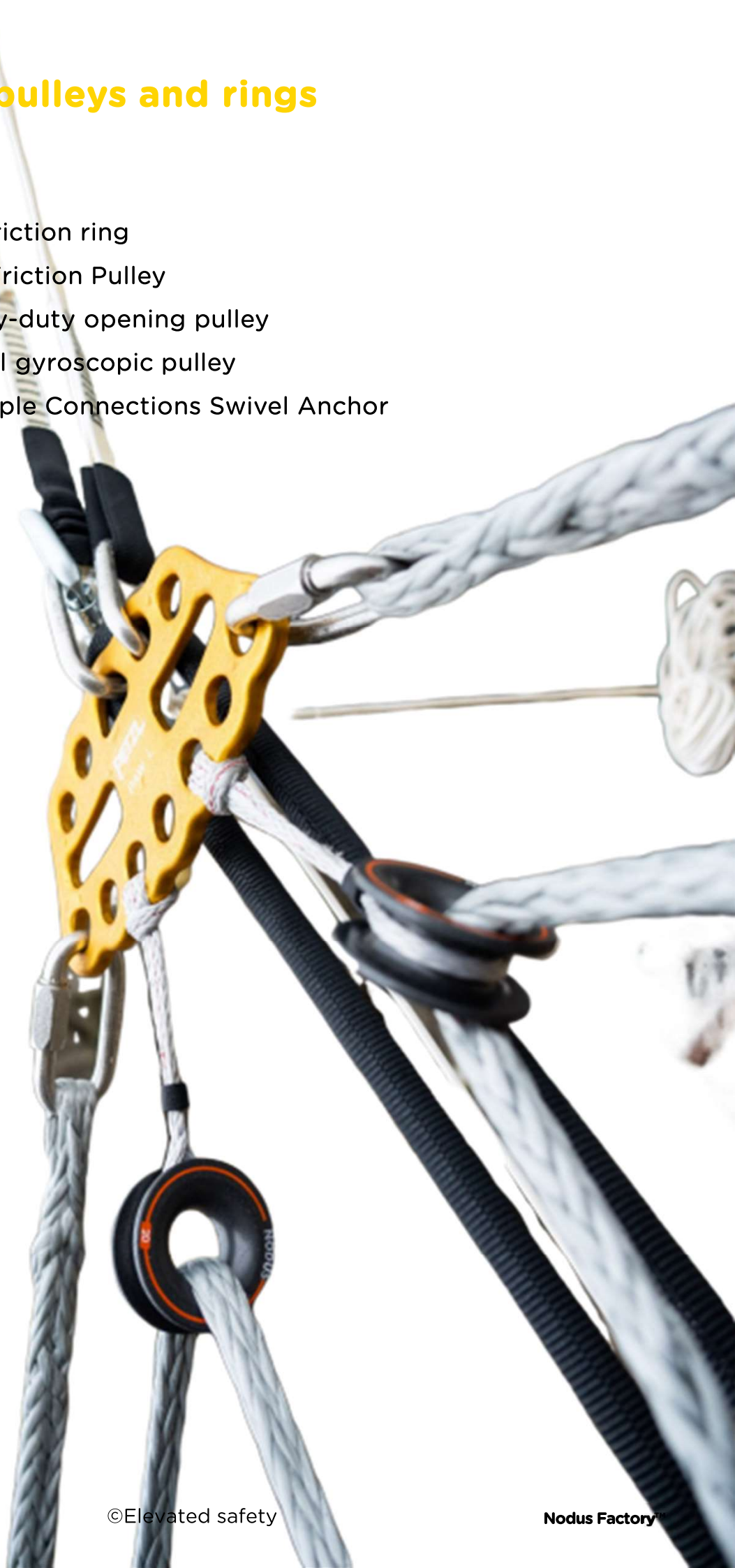
Low-friction pulleys and rings are an essential tool for intervention professionals. They can help improve the **efficiency, safety and productivity** of response operations.



Low-friction® pulleys and rings

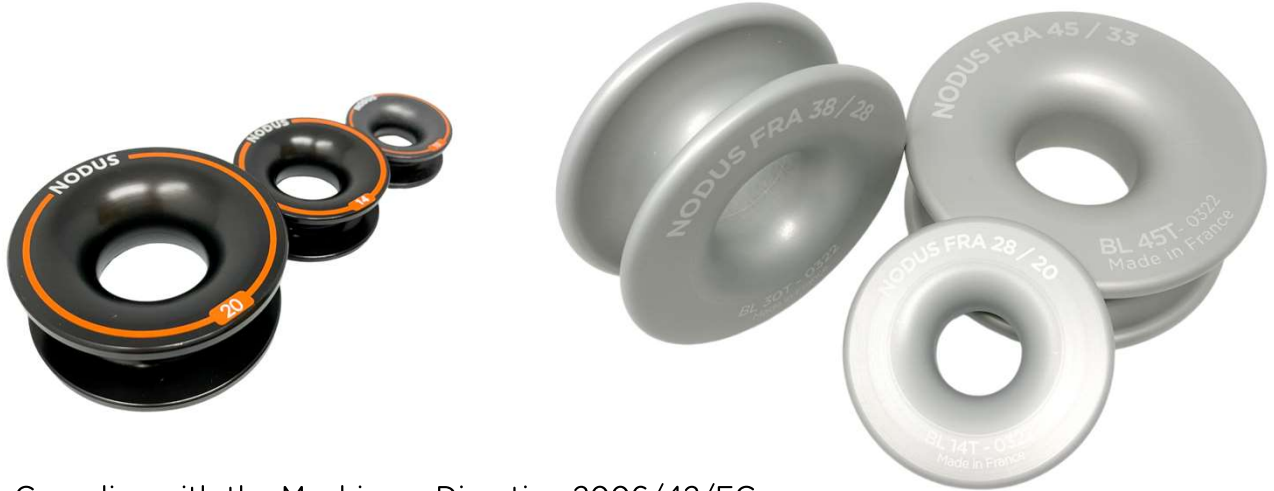
Produce :

- **Freering®** - Low-friction ring
- **Freenub®** - Nub® Friction Pulley
- **Freehook®** - Heavy-duty opening pulley
- **Block-Ring®** - Dual gyroscopic pulley
- **Mickey-Ring®** - Triple Connections Swivel Anchor



Freering® - Friction ring

Retention ring for high load

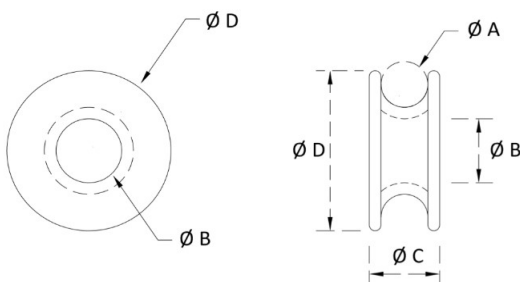


CE Complies with the Machinery Directive 2006/42/EC

Designation	Breaking Load	Ø A	Ø B	Ø D	Rope	Rope	Weight
Ring	kN	Ø groove mm	Ø Eye mm	Height mm	Ø groove Max mm	Ø Eye Max mm	gr
Freering D 10	15	8	12	30	7	8	8
Freering D 14	18	11	16	40	9	10	16
Freering D 20	50	17	24	60	15	16	80
Freering A 28	140	20	28	85	18	20	170
Freering A 38	300	28	38	110	26	30	318
Freering A 45	450	33	45	130	30	36	414

DATA SHEET

- Fr Low Friction High Strength Aluminum Ring 7075
- Hard Anodizing Treatment
- ✓ Friction resistance with a good coefficient of slippage under high load
- ✓ Improved stiffness
- ✓ Corrosion resistance (to nickel salt sealing, approx. 300 hours)
- ✓ The hard oxide layer develops 50% in excess thickness and 50% in metal
- FrD Colour dark grey anthracite, orange marking
- FrA Light grey colour, white markings



USES

- The Freering® ring can be used as a:
- ✓ hauling point, mobile anchoring accessory
 - ✓ Restraint brake "double or triple passage of the rope through the ring"
 - ✓ Deflection point or connecting element
 - ✓ Can be used as a replacement for pulleys
- Textile connector / see product sheet **Freelock®**

Additional information: sales@nodusfactory.com

NODUS
FACTORY
MADE IN FRANCE

www.nodusfactory-industry.com



Scan me !

Freering® - Friction ring

Retention ring for high load



The low-friction, high-strength hauling ring, Freering® is suitable for the passage of ropes with sewn or spliced terminations thanks to its large opening. Suitable for permanent connections, but also for felling and dismantling work during pruning work.

Its use in double or triple passes of the retention rope also allows braking when lowering the load.

- ✓ It can be used either with a lark's head sling or ideally with the Freelock® sling, a multi-purpose textile connector for retention rings.

This product should not be used beyond its limits or in any situation other than that for which it is intended.

Advantages

- Ease of use
- Weight-to-high strength ratio
- Performance, lightness and reliability
- Flexibility of the textile connector

Reference

Freering D 12 / 8	40098
Freering D 16 / 11	40099
Freering D 24 / 17	40100
Freering A 28 / 20	40002
Freering A 38 / 28	40003
Freering A 45 / 33	40004



Freenub® - Friction pulley Nub®

« Multi-purpose friction pulley High Load »



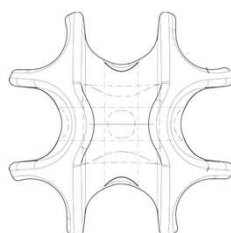
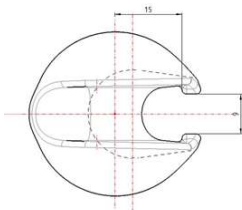
CE Complies with the Machinery Directive 2006/42/EC

Designation	Breaking Load	Ø A	Ø B	Ø D	Rope	Weight
	 kN	Ø groove	Ø groove	Height	Ø	
Ring		mm	mm	mm	Max mm	gr
Freenub 40	47	12	12	40	10	26
Freenub 60	350	16	16	60	14	134

DATA SHEET

Spherical friction pulley:

- ✓ Freenub 40, High-tech polyamide (low friction)
- ✓ Freenub 60, High-strength anodized 7075 aluminum. (high friction)



USES

The Freenub® pulley can be used as:

- ✓ Hauling pulley and mobile anchor accessory
- ✓ Waterfall hoist and deflection point
- ✓ Connecting Element
- ✓ Device stop end cap: **Rope-Puck**
- Allows the passage of ropes without friction and without damaging them.

Textile connector accessory / see product sheet

Freelock®
MTS 10®

Additional information: sales@nodusfactory.com

NODUS
FACTORY
MADE IN FRANCE

www.nodusfactory-industry.com



Scan me !

Freenub® - Nub Friction Pulley®

« Multi-purpose friction pulley High Load »



This Freenub® low friction pulley is designed for lifting, forestry/pruning, towing, dismantling, rescue work,... heavy load.

It must be used:

- ✓ In combination with elements (ropes, slings, etc.) with compatible dimensions and resistances

The wide design of these grooves optimizes the lowering of loads with minimal friction by the retention rope.

It can be used either:

- ✓ With a sling with the so-called lark's head knot
- ✓ With the sling **Freelock®** a multi-purpose textile connector for friction ring or Nub pulley.
- ✓ The Shackle **MTS 10**

This product should not be used beyond its limits or in any situation other than that for which it is intended.

Advantages

- Absolute safety, because when the "mobile" running rope passes inside the standing rope, there can be no break in the structural chain
- Ease of use
- Weight-to-high strength ratio
- Performance, lightness and reliability

Reference

Freenub 40	40022
Freenub 60	40008

MTS 10




NODUS
FACTORY
MADE IN FRANCE

Freehook® - Heavy-duty opening pulley

« Heavy Duty Multi-Purpose Friction Opening Pulley »



CE Complies with the Machinery Directive 2006/42/EC

Designation	Breaking Load	Ø A	Rope	Weight
	 kN	Ø Oeil	Ø	
Open Ring		mm	Max mm	gr
Freehook 16	65	16	14	120
Freehook 22	80	22	20	270
Freehook 32	120	32	30	350

DATA SHEET

Opening pulley:

- 7075 Aluminum Open Friction Ring
- ✓ Polished and anodized, hardened, grey
- ✓ Internal diameter according to model

Textile connector:

- Textile shackle in Dyneema® High load M® or Ms®
- ✓ Rope core Dyneema® SK78 12fx
- ✓ 48 FX pre-stretched oversheath, enzymed - Black
- ✓ T-Bone 7075 Aluminum

Safety LockTwist Lock®

- ✓ Velcro® - Polypropylene & Black PA Velvet

USES

Friction opening pulleys for hauling or occasional returns.

- ✓ Allows control and return of ropes even under tension
- ✓ Allows the pulley to be positioned anywhere along the rope
- ✓ Ideal for quickly creating a hoist for crevasse rescues
- *Gear reduction with a pulley reduces the weight of the fallen person by half, so that a strong partner can pull the victim up on their own.*

Additional information: sales@nodusfactory.com

NODUS
FACTORY
MADE IN FRANCE

www.nodusfactory-industry.com



Scan me !

Freehook® - Poulie ouvrante forte charge

« Heavy Duty Multi-Purpose Friction Opening Pulley »



The Freehook® opening pulley is a low-friction open ring with a Dyneema® textile connector, it allows you to replace a pulley or divert a maneuver on rope or textile cable.

A great alternative to conventional opening pulleys for hooking a flying rope.

- This Freehook® Low Friction Opening Pulley is designed for lifting, forestry/pruning, towing, dismantling, rescue work,... heavy load.

It must be used:

- In combination with elements (ropes, slings, etc.) with compatible dimensions and resistances

This product should not be used beyond its limits or in any situation other than that for which it is intended.

Advantages

- Safety, because the "mobile" running rope passes inside the "connector" standing rope, there can be no break in the structural chain
- Ease of installation and use
- Weight-to-high strength ratio
- Performance, lightness and reliability

Reference

Freehook 16	40070
Freehook 22	40071
Freehook 32	40072



NODUS
FACTORY
MADE IN FRANCE

Block-Ring® - Double gyro pulley

« Retention pulley and high load reefing system »



CE Complies with the Machinery Directive 2006/42/EC

Designation	Breaking Load	Ø Inside	Ø Rope
	Direct	Rings	Recommended maximum
	kN	mm	mm
Block-Ring 20-14	36/18	24/14	14/10

DATA SHEET

- ❑ Fr Low-friction, high-strength 7075 aluminum ring
- ✓ Hard Anodizing Treatment
- ✓ Its elastic strength is of the order of 300 MPa, and its Young's modulus is 75 Gpa
- ❑ Crimping between rings by textile axis:
- ✓ Loop Dyneema DSK78 12 braid

Friction Rings Freering® :

- FrD Colour dark grey anthracite, orange marking
- FrA Light grey colour, white marking

USES

The double block-ring® pulley, allows large deflection angles without increasing friction, it has an exceptional weight-to-strength ratio (10 times lighter than a pulley), designed for high loads.

- ✓ 3D Adjustment
 - ✓ Palans
 - ✓ hauling point, mobile anchoring accessory
 - ✓ Deflection point or connecting element
- Can be used as a replacement for pulleys

Additional information: sales@nodusfactory.com

NODUS
FACTORY
MADE IN FRANCE

www.nodusfactory-industry.com



Scan me !

Block-Ring® - Double gyro pulley

« Retention pulley and high load reefing system »



The double deflection pulley, Block-Ring FrD is a set composed of 2 low-friction rings mounted on a Dyneema® textile shaft, ideal for efficiently making your 3D® adjustment of the pull point or deflection.

Lightweight and compact, the multiaxial 3D deflection pulley allows perfect alignment of connections at different angles, each friction ring is swivel and mobile.

The double block-ring® pulleys also make it possible to produce 2/1 hoists.

➤ This product should not be used beyond its limits or in any situation other than that for which it is intended.

Advantages

- The textile bond allows the load to self-align
- Ease of use
- Weight-to-high strength ratio
- Performance, lightness and reliability

Reference

Block-Ring D 20 / 14	40019
----------------------	-------



Mickey-Ring® - Triple Connections Swivel Anchor

"Heavy Duty Multi-Purpose Retention Ring and Haul"



CE Complies with the Machinery Directive 2006/42/EC

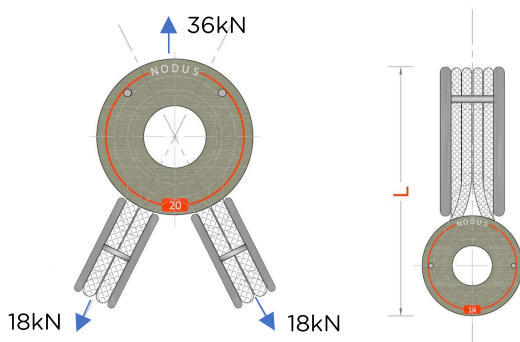
Designation	Breaking Load	Ø Inside	Ø Rope
	Direct	Rings	Recommended maximum
	kN	mm	mm
Mickey-Ring 20	36/18	24/14	14/10
Mickey-Ring 45	450/140	45/28	24/16

DATA SHEET

- ❑ Fr Low Friction High Strength Aluminum Ring 7075
- ✓ Hard Anodizing Treatment
- ✓ Its elastic strength is of the order of 300 MPa, and its Young's modulus is 75 GPa
- Sertissage entre anneaux par axe textile :
- ✓ Loop Dyneema DSK78 12 braid

Friction Rings Freeing :

- FrD Colour dark grey anthracite, orange marking
- FrA Light arev colour, white markings



USES

The Mickey-Ring® multiple anchor allows for large deflection angles without increasing friction, it has an exceptional weight-to-strength ratio (10 times lighter than a pulley), designed for high loads.

- ✓ Multiple Connections with Load Transfer
- ✓ Cable
- ✓ Rescue operations
- ✓ 3D Adjustment
- ✓ Deflection point or connecting element

Additional information: sales@nodusfactory.com

NODUS
FACTORY
MADE IN FRANCE

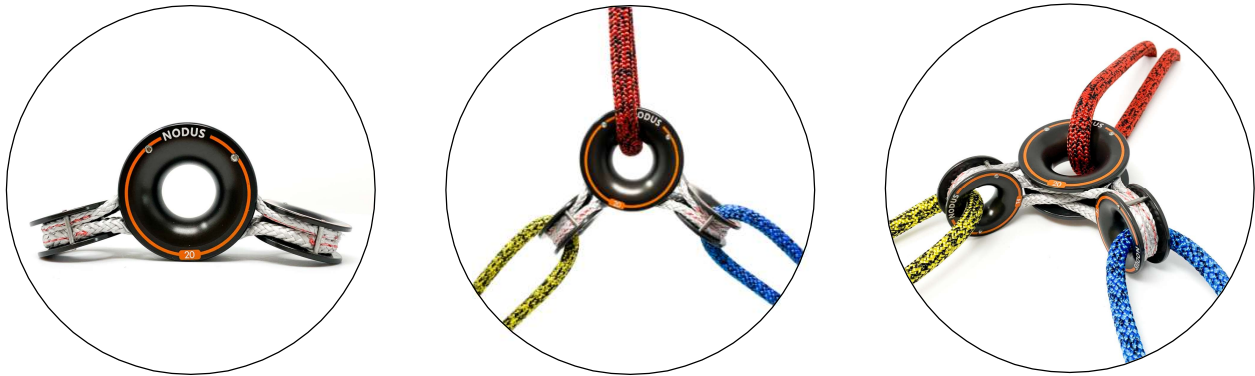
www.nodusfactory-industry.com



Scan me !

Mickey-Ring® - Triple Connections Swivel Anchor

"Heavy Duty Multi-Purpose Retention Ring and Haul"



The Mickey-ring 3D pivot anchor is a set composed of 3 connection points, ideal for efficiently making your 3D adjustments.

- Lightweight and compact, the multiaxial friction 3D pulley allows perfect alignment of connections at different angles, each friction ring is steerable
- Easy to set up, this 3D multiaxial pivot anchor system with a rotating friction ring up to 210° will produce minimal friction and wear on your ropes.
- This product should not be used beyond its limits or in any situation other than that for which it is intended.

Advantages

- Ease of use
- Weight-to-high strength ratio
- Performance, lightness and reliability
- The textile bond between the ring allows the load to self-align

Reference

Mickey-Ring D 20 / 14	40068
Mickey-Ring A 45 / 28	40069



Lashing and lifting® straps

Lashing and lifting straps are essential safety equipment used to secure and move loads. They are available in a variety of materials, sizes, and designs to suit a variety of applications.

Lashing and lifting straps are usually made from synthetic materials, such as polyester or nylon. These materials are very strong and offer good tensile strength. Nodusfactory designs and manufactures lashing and lifting straps in technical fibers such as Dyneema and Technora for static applications with low elongation and high loads.

Lashing and lifting straps are also available in a variety of colors for easy visibility.

There are two main types of tie-down and lifting straps: buckle straps and ratchet straps.

- Buckle straps are simple to use and can be adapted to a variety of loads.
- Ratchet straps provide a more precise fit and are easier to use in tight spaces.

Lashing and lifting straps should be used in accordance with the manufacturer's instructions. They should also be inspected regularly to ensure that they are in good condition and can support the intended load.

Here are some tips for using tie-down and lifting straps safely:

- Select the right strap for the load.
- Use the correct lashing technique.
- Inspect the straps regularly.

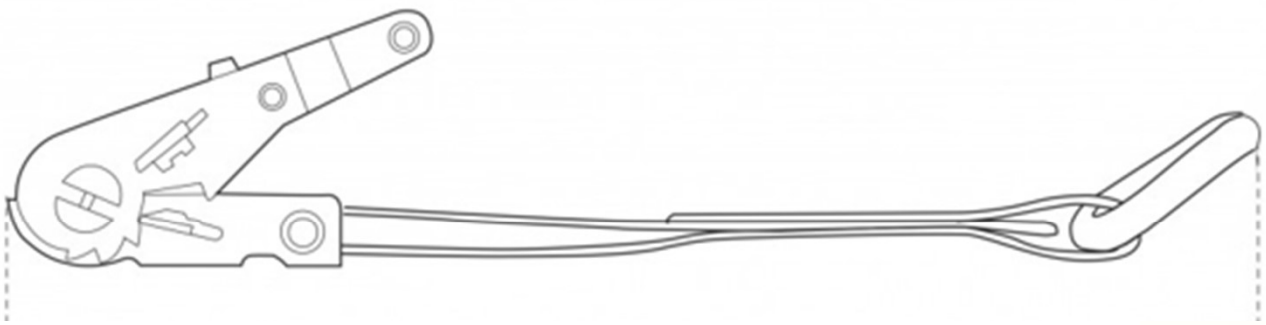
Lashing and lifting straps are an essential tool for safety and efficiency. By using them correctly, you can help protect people and property.



Lashing and lifting® straps

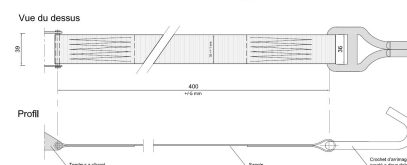
Produce :

- **Textiles-Strap® C** - Custom-made ratchet tie-down strap
- **Textiles-Strap® L** - Custom-made lever tie-down strap






Textile-Strap® C - Tie-down ratchet straps custom

« Flat lashing strap with ratchet tensioner »



CE This product complies with EN-12195-2

Designation	Strap	Lengthening	Width	Length	Hook	Tensioner	TMU / LC
Textile-Strap	Breaking load		Strap	Tailor-made	CS / CD	TS / TI	coef 2
	daN	%	mm	cm	daN	daN	daN
				1 part			 
TS-C 35 P	3750	3,4	35	40	CD 3000	TI 2000	500 1000
TS-A Tailor-made							

DATA SHEET

Flat webbing in Polyester® or Dyneema® fibers adjustable by ratchet tensioner.

- Custom-made
- ✓ Single or double stainless steel claw hook
- ✓ Single or reverse ratchet tensioner in stainless steel

Nomenclature:

Strap:

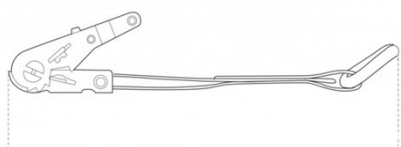
- ✓ D for Dyneema
- ✓ P for Polyester

Square brackets:

- ✓ CS for single hook
- ✓ CD for double hook

Tensioners:

- ✓ TS for Single Tensioner
- ✓ TI for Reverse Tensioner



USES

Textile-Strap®-Adjustable

Adjustable reverse ratchet tensioner strap for various load applications.

Road, Air, and Marine
 ✓ Ideal for direct snap lashing

Can be used for:

- Stowage on luggage trailers, stowage of motorcycles, quads, mini excavators, boat tenders,... etc

All models are extremely reliable and of excellent quality.

Additional information: sales@nodusfactory.com

NODUS
FACTORY
 MADE IN FRANCE

www.nodusfactory-industry.com



Scan me !

Textile-Strap® C - Tie-down ratchet straps custom

« Flat lashing strap with ratchet tensioner »



The Adjustable Textile-Strap® Ratchet Strap is a restraint strap designed to hold and secure goods or equipment. Using a ratchet tensioner, they are tightened and attached to create a secure and reliable attachment to the bracket.

Ratchet straps are commonly used as restraints in the following applications:

- ✓ Pallets for transporting goods
- ✓ Equipment crates or goods ready for transport
- ✓ Boat tenders

Choose the strap with ratchet tensioner that best suits your needs according to the T.M.U. of the elements to be secured, the length and the breakage of the strap.

TMU / LC:

Maximum Working Voltage or Mooring Capacity.

Maximum Force Used in direct traction supported by a mooring system during use.

Duty cycle:

Complete system = coefficient 2

Accessories / buckles = coefficient 2

Unsewn textile webbing = coefficient 3

This product should not be used beyond its limits or in any situation other than that for which it is intended.

Advantages

- High abrasion resistance
- Claw hooks and turnbuckles included
- Breakage resistant from 500 kg on request up to 5,000 kg
- Use in cold environments (freezing)

Références

TS-C 35 Polyester	40092
TS-C sur mesure	



Parc d'Activités de Laroiseau • 5 rue Ella Maillart • F- 56000 Vannes


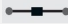
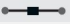

Tél : +33 (0)2 97 67 64 83 • Mail : sales@nodusfactory.com • Internet : www.nodusfactory-industry.com

Textile-Strap® L - Custom-made lever tie-down strap

« Flat tie-down strap with lever tensioner »



CE This product complies with EN-12195-2

Designation	Strap	Lengthening	Width	Length	Hook	Tensioner	TMU / LC
Textile-Strap L	Breaking load		Strap	Tailor-made	CM	TL	Coef 2
	daN	%	mm	m	daN	daN	daN
				2 pieces	Karabiner		 
TS-L 45 P	900	3,4	45	1,80 1,60	1200	750	325 750
TS-L « Tailor-made »							

DATA SHEET

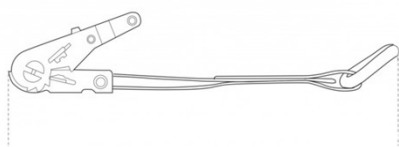
Flat webbing in Polyester® or Dyneema® fibers adjustable by lever tensioner.

- Custom-made
- Delta stainless steel carabiner 316L A4
- 304L A2 stainless steel lever tensioner

Nomenclature :

- Strap :
- ✓ *D* is for Dyneema
- ✓ *P* for Polyester
- Square brackets:
- ✓ *CM* for carabiner
- Tensioners:
- ✓ *TL* for Lever Tensioner

Optional accessories on request, tensioner type, single or double hooks,... etc



USES

Textile-Strap® L

Adjustable lever tensioner strap for various load applications.

Road, Air, and Marine
✓ Ideal for direct snap lashing

Can be used for:

- Stowage on luggage trailers, stowage of motorcycles, quads, mini excavators, boat tenders,... Etc

All models are extremely reliable and of excellent quality.

Additional information: sales@nodusfactory.com

NODUS
FACTORY
MADE IN FRANCE

www.nodusfactory-industry.com



Scan me !

Textile-Strap® L - Custom-made lever tie-down strap

« Flat tie-down strap with lever tensioner »



The Textile-Strap® L lever tensioner strap is a restraint strap designed to hold and secure goods or equipment. With the help of a lever, they are tightened and attached to create a secure and reliable attachment to the bracket.

Lever straps are commonly used as restraints in the following applications:

- ✓ Pallets for transporting goods
- ✓ Equipment crates or goods ready for transport
- ✓ Boat tenders

Choose the lever strap that best suits your needs according to the T.M.U. of the elements to be secured, the length and the breakage of the strap.

TMU / LC :

Maximum Working Voltage or Mooring Capacity.

Maximum Force Used in direct traction supported by a mooring system during use.

Coefficient of use:

Complete system = coefficient 2

Accessories / buckles = coefficient 2

Unsewn textile webbing = coefficient 3

This product should not be used beyond its limits or in any situation other than that for which it is intended.

Advantages

- High abrasion resistance
- Lever tensioner
- Claw hooks, carabiners, shackles,... Various possible accessories
- Breaking strength of 250 kg on request up to 5,000 kg
- Use in cold environments (freezing)

References

TS-L 45 Polyester	40091
TS-L Tailor-made	



Dyneema® and Aramid® ropes® and buckle

Dyneema and aramid ropes, slings and buckles are essential equipment for intervention professionals. They are used to secure and move loads, to form anchor points, and to perform a variety of other tasks.

Dyneema and aramid are ultra-strong synthetic materials. They offer exceptional tensile strength, lightness, and increased durability. These materials are also resistant to corrosion and chemicals.

Dyneema and Aramid ropes, slings, and buckles are available in a variety of sizes, shapes, and load capacities. They are designed to meet a variety of applications, including working at heights, construction, rescue, and lifting.

Here are some advantages of Dyneema and aramid ropes, slings and buckles for intervention professionals:

Exceptional resistance: Dyneema and aramid offer exceptional tensile strength, making them ideal for applications where loads are high or the risk of breakage is high.

Lightness: Dyneema and aramid are very lightweight, making them easy to handle and carry.

Durability: Dyneema and aramid are very durable and can withstand harsh conditions.

Corrosion Resistance: Dyneema and aramid are corrosion-resistant, making them ideal for applications where fillers are exposed to chemicals or water.

Dyneema and aramid ropes, slings and buckles are a wise investment for intervention professionals. They can help improve the safety, efficiency and productivity of response operations.

- In working at heights, Dyneema and aramid ropes can be used to secure workers, to form anchor points and to lift loads.
- In construction, Dyneema and aramid slings can be used to lift heavy loads, such as beams or columns.
- In rescue operations, Dyneema and aramid loops can be used to secure victims, to form anchor points, and to lift loads.

Dyneema and Aramid ropes, slings, and buckles are a versatile tool that can be used in a variety of applications. They offer a number of advantages over traditional materials, including strength, lightness, and durability.



Dyneema® and Aramid® ropes® and buckle

Produce :

- **Cordage Dytec®** - Dyneema® and Technora® Bi-material Cable
- **Textiles-Sling®** - Static "lug loops" sling
- **Slings-Loop®** - Endless sling Dyneema®



Rope Dytech® - Bi-material cable Dyneema® and Technora®

« Dytech® Textile Cable for Industry and Forestry »



Designation	Diameter	Breaking Load
Bi-material textile cable	mm	daN
Dytech 6	6	3000
Dytech 8	8	6000
Dytech 10	10	9000
Dytech 12	12	12000
Dytech 14	14	16000
Dytech 16	16	22500
Dytech 18	18	26000
Dytech « otherØ »	Tailor-made	

DATA SHEET

Dytech®: Dyneema® and Technora® bi-material blend.

12-bobbin hollow braid with polyurethane sizing

- Dyneema Fiber - Ultra High Modulus Polyethylene - Light Grey Color
- ✓ Temperature resistance - 140°C
- ✓ Loss of resistance of 50% at 80°C
- ✓ Excellent resistance to UV rays and chemical agents
- ✓ Very low elongation power < 2.5%

- Technora Fibre - Aramid "Aromatic Polyamides" - Black
- ✓ Excellent temperature resistance - 550°C
- ✓ Loss of resistance of 50% at 300°C
- ✓ Good resistance to chemical agents
- ✓ Very low elongation power < 1%

USES

Static rope with very good resistance to bending, abrasion and dynamic friction.

- As a replacement for steel wire rope and other textile ropes that are less resistant to heat.
- Can be used with any type of winch Industry, lifting, construction,...
- It is perfectly compatible with all commercial accessories: chain, steel cable,...

Additional information: sales@nodusfactory.com

NODUS
FACTORY
MADE IN FRANCE

www.nodusfactory-industry.com



Scan me !

Rope Dytech® - Bi-material cable Dyneema® and Technora®

« Dytech® Textile Cable for Industry and Forestry »



The Dytech rope is a textile cable intended for industrial or extreme use such as forestry, its design by a blend of two high-performance fibers allows it to provide excellent resistance to friction and heat.

« A rope originally designed by Nodus Factory for military applications, for use on furlers and winches. »

Supplied at the desired length

Option: Splicing can be done in our workshops

This product should not be used beyond its limits or in any situation other than that for which it is intended.

Advantages

- Resistant to heat and deformation
- Low elongation = 2.5% to 50% of the breaking load
- Very good abrasion resistance
- Easy to splice
- Use in cold environments (freezing)

References

Dytech 6	40033
Dytech 8	40034
Dytech 10	40035
Dytech 12	40036
Dytech 14	40037
Dytech 16	40038
Dytech 18	40039
Dytech « other Ø »	



Textile-Sling® - Dyneema® cable sling with thimbled loops

«Polyester® & Dyneema® rope sling for industry and forestry»



CE Complies with the Machinery Directive 2006/42/EC

Designation	Diameter	Breaking Load
Bi-material textile cable	mm	Elongation 10%
Polyester / Dyneema	Ø	daN
Textile Sling P/D 14	14	8500
Textile Sling P/D 16	16	12000
Textile Sling P/D18	18	15000
Textile Sling P/D 20	20	20000
Textile Sling « Other Ø »	Tailor-made	

DATA SHEET

Textile-Sling®: Bi-material rope
*P/D = Sheath Polyester-Carbon / Core Dyneema®
 Double Sheath*

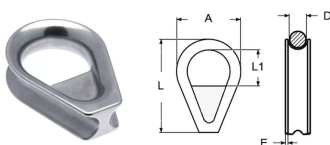
Polyester PES® & Carbon Gripfibre
 Carbon fiber intermediate sheath for extra strength at the same diameter.

Core

Dyneema Sk78 Fiber - Ultra High Modulus Polyethylene.

➤ *Pre-stretched and HDPE over-sheath splice*

Reinforced Stainless Steel Thimble



Colour



USES

Textile sling with "spliced eye" Reinforced Stainless Steel Thimble

- Very good resistance
- Ideal as a replacement for steel cable.

Ideal for your material handling operations

- Length and diameter on request

Additional information: sales@nodusfactory.com

NODUS
FACTORY
 MADE IN FRANCE



www.nodusfactory-industry.com

Scan me !

Textile-Sling® - Dyneema® cable sling with thimbled loops

«Polyester® & Dyneema® rope sling for industry and forestry»



The Textile-Sling® Bi-material rope reference P/D is a static textile cable intended for industrial or extreme use, such as forestry.

Its design by a blend of two high-performance fibers allows it to provide excellent resistance and elongation.

- Supplied at the desired length
- Splicing made in our workshops

This product should not be used beyond its limits or in any situation other than that for which it is intended.

Advantages

- Low elongation
- Strength comparable to a wire rope
- Robust and durable

References

Textile Sling P/D 14	40073
Textile Sling P/D 16	40074
Textile Sling P/D 18	40075
Textile Sling P/D 20	40076
Textile Sling « autre Ø »	

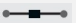
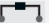


Slings-loop® - Endless round sling in Dyneema®

« Dyneema® sk99 fiber sling for industry and forestry work »



CE Complies with the Machinery Directive 2006/42/EC

Designation	Diameter	Length	Breaking Load	WLL	
Endless Sling	mm	≤ 2%	Lengthening 2,5 %	daN	
Dyneema sk99	Ø Strand	Minimal mm	daN		
Slings-loop S 7	7	100	7000	1000	2000
Slings-loop S 10	10	125	10500	1500	3000
Slings-loop S 12	12	150	12000	1700	3400
Slings-loop S 14	14	175	15000	2100	4200
Slings-loop S 16	16	250	20000	2800	5600
Slings-loop S 25	25	1000	50000	7000	14000
Slings-loop « Other Ø »					

DATA SHEET

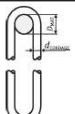
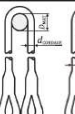
Slings-loop®: Endless Bi-material sling
D/D = Dyneema® Sheath / Dyneema core®
 Âme « Core »

□ Dyneema fiber Sk99 - 12 braids
 Ultra-high modulus polyethylene.
 ➤ *Pre-stretched and splice locked and sewn Sheath*

Dyneema fiber Sk78 - 48 braids
 Ultra High Modulus Polyethylene.
 ➤ *Pre-stretched and splice locked and sewn Length and diameter on request*

ISO 18264:2016(F)

Tableau B.1 — Référence pour le classement et le déclassé des élingues

D _{MAT} /d _{CORDAGE}	Fabrication d'élingues dans un élingage en panier	Fabrication sans fin rattachée aux accessoires/matériels
		
3	70 %	90 %
2,5	70 %	85 %
2	65 %	80 %
1,5	60 %	75 %
1	50 %	65 %

NOTE Le pourcentage mentionné est le pourcentage de la résistance à la rupture avec épissure déterminée d'un assemblage d'élingues (voir 6.5 et Article 7).

USES

Endless Textile Sling
 ➤ Ideal as a replacement for steel cable.
 ➤ Ideal for your material handling operations

A visual examination must be performed each time before use by the end user.

Type C rope: ropes with cover
 ISO 10325:2018(E)



Additional information: sales@nodusfactory.com

NODUS
FACTORY
 MADE IN FRANCE



www.nodusfactory-industry.com

Scan me !

Slings-loop® - Endless round sling in Dyneema®

« Dyneema® sk99 fiber sling for industry and forestry work »



The Sling-loop® Bi-material reference D/D is a static endless sling intended for industrial or extreme use, such as forestry. Its design combines two high-performance fibers and a polymerizing induction that gives it excellent strength and low elongation.

➤ Custom Length

This product should not be used beyond its limits or in any situation other than that for which it is intended.

Advantages

- 8 times lighter than a steel cable
- Superior strength to steel cables
- Highly resistant to abrasion
- Low elongation
- Robust and durable

References

Sling-loop 7	40085
Sling-loop 10	40086
Sling-loop 12	40087
Sling-loop 14	40088
Sling-loop 16	40089
Sling-loop 25	40090
Sling-loop xx	Custom



Composites and textiles of the future

The textile of the future for intervention professionals is being developed and offers a number of promising possibilities.

Notable trends include:

Lighter and stronger materials: Composite materials, such as Dyneema and aramid, are already used in some response equipment, but they are becoming increasingly affordable and available in a wider variety of formats.

- These materials offer exceptional tensile strength, lightness, and increased durability.

Smarter Materials: Smart materials are able to respond to changes in their environment. They can be used to create apparel and equipment that tailors its performance to weather conditions, environmental hazards, or user needs.

- Smart materials are still in an early stage of development, but they have the potential to revolutionize the way intervention professionals interact with their environment.

More sustainable materials: Response professionals face a variety of hazards, including chemicals, extreme temperatures, and sharp objects. Durable materials are designed to withstand these risks and last longer.

- Sustainable materials are becoming increasingly important for response professionals, as they can help reduce costs and improve safety.

These trends have the potential to transform the way intervention professionals work.

- The textiles of the future can make response equipment lighter, stronger, smarter and more durable.
- This can improve the safety, efficiency and productivity of interventions.

« Safety and efficiency at the heart of our products. »





Parc d'Activités de Laroiseau • 5 rue Ella Maillart • F- 56000 Vannes
Tél : +33 (0)2 97 67 64 83 • Mail : Sales@nodusfactory.com
www.nodusfactory-Industry.com